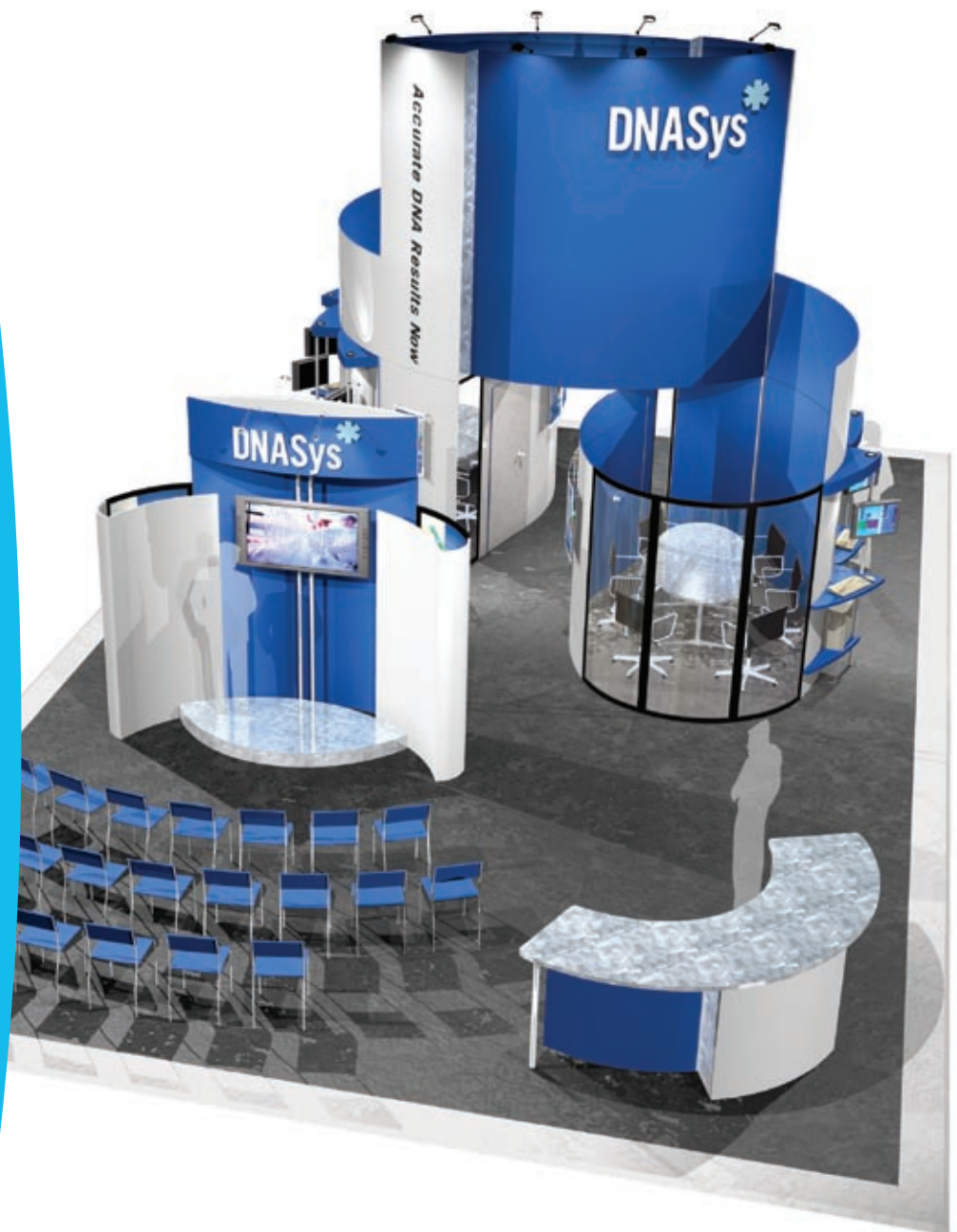


# Engage® Panel System

Structural Panels, Unique Design

exhibiting solutions



# Structural, Versatile, Elegant: Engage® Panel System

## Your Perfect Exhibit Solution

With many panel shapes and sizes, hundreds of finishes, a universal connection system and true compatibility with all other Skyline systems, you can achieve any look and ultimate functionality.

## Lightweight, Sleek and Sturdy

Its strong aluminum frame and honeycomb core give you a structural panel that has a sleek, elegant profile. Our patented Slide-Connect technology allows for quick and easy installation.

## Maximize Your Event ROI

Our slim, lightweight panels pack efficiently which can drastically reduce operating costs like shipping, storage and drayage.



Universal panels reconfigure to fit your varying needs and exhibit sizes.

Present your message in style! Engage® supports all kinds of Skyline graphics from custom 3D logos to backlit graphics and text signs.



Reduce your operating expenses! The island exhibit above fits in just 3 containers.



1

2

3

4

5

*Accurate DNA Results Now*

SSS





## 1 3D letters and logos

Computer-cut letters and logos in a variety of materials add dimension to your name or message.

## 2 Precision-fit panels

Panels are constructed to achieve absolute 90° corners so they align perfectly without gaps.

## 3 Elegant lighting

Attached and integral lighting fixtures highlight your message and products.

## 4 Custom counters

Shelving and counters in any style are available for product demonstration or presentations.

## 5 Clear and frosted windows

Great for conference rooms. Windows create space for private meetings yet maintain an open feel.



Conference rooms allow you to conduct business away from the commotion of the show floor.

## 6 Stand-off graphics

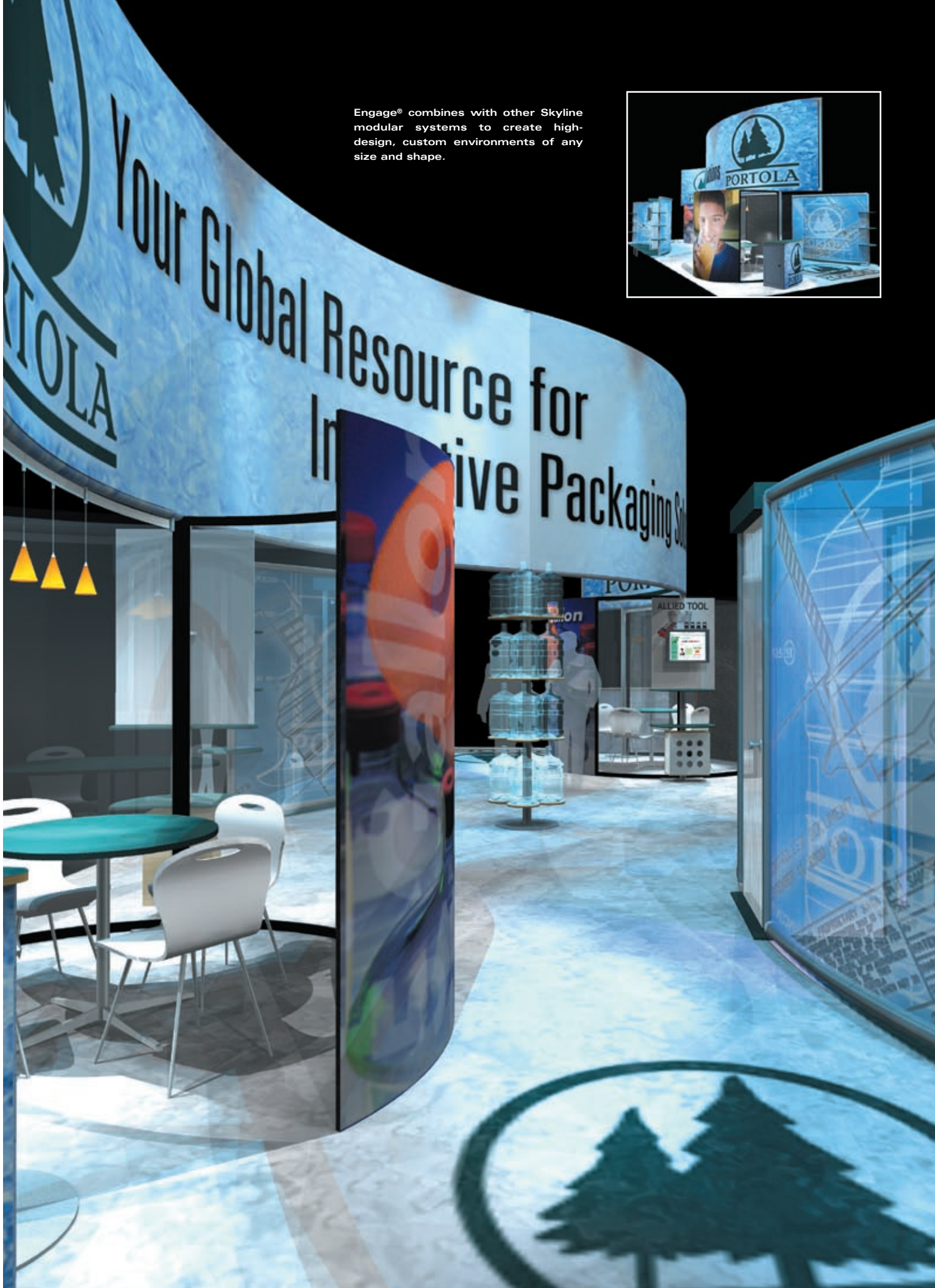
Add interest and depth with stand-off graphics. They provide a custom look and are easy to change out.

## 7 Backlit graphics

Attract attention! Graphic panels can be backlit to highlight your name or message.



Engage® combines with other Skyline modular systems to create high-design, custom environments of any size and shape.





## Engage® Panel System



Patented Slide-Connect technology allows for quick and easy installation. Panels simply slide together and lock into place.



One-of-a-kind wire conduit system is built into all panels hiding electrical cords and providing a clean, professional look.



Laminates: Hundreds of textures and colors available to fit any look.



Engage® works with other Skyline systems to create a complete solution. Slatwall panels with a variety of accessories are available for extensive product merchandising.

Patents 6,536,147 and 6,543,164

**Skyline Exhibits**  
3355 Discovery Road  
St. Paul, Minnesota 55121

1-800-328-2725  
1-651-234-6592 International

[www.skyline.com](http://www.skyline.com)